

# Stage 22

## Specs

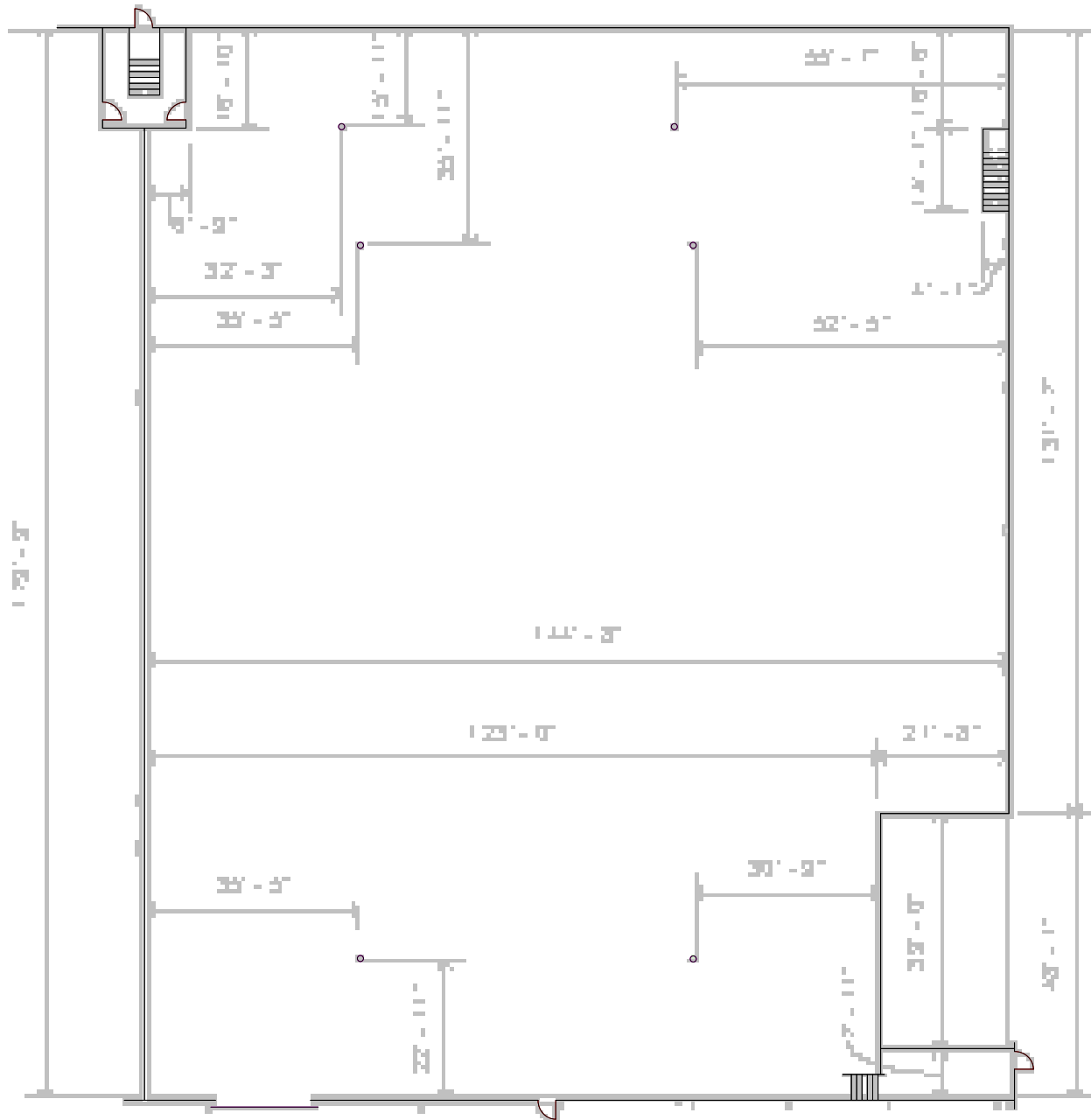
- 23,904 sqft
- 16'x16' Elephant door
- 23' 6" to grid
- 3 - Phase 3600 AMPS

## Features

- 8,000 sq ft of production offices
- 5,000 sq ft mill attached
- 2 loading docks
- WiFi throughout
- 24-hour security

## Key Notes

- 1) 1200 Amp power drops



1 1ST FLOOR - STUDIO 22  
1/32" = 1'-0"



# Stage 22

## Specs

22,922 sq ft  
16'x16' Elephant door  
26' to grid  
3 - Phase 1200 AMPS  
80 Tons HVAC

## Features

20,000 sq ft of production  
office space  
100+ Parking Spaces  
10,000 sq ft warehouse  
support space  
2 loading docks  
WiFi throughout  
24-hour security

## Keynotes

1) 3 Phase - 3600 AMPS

