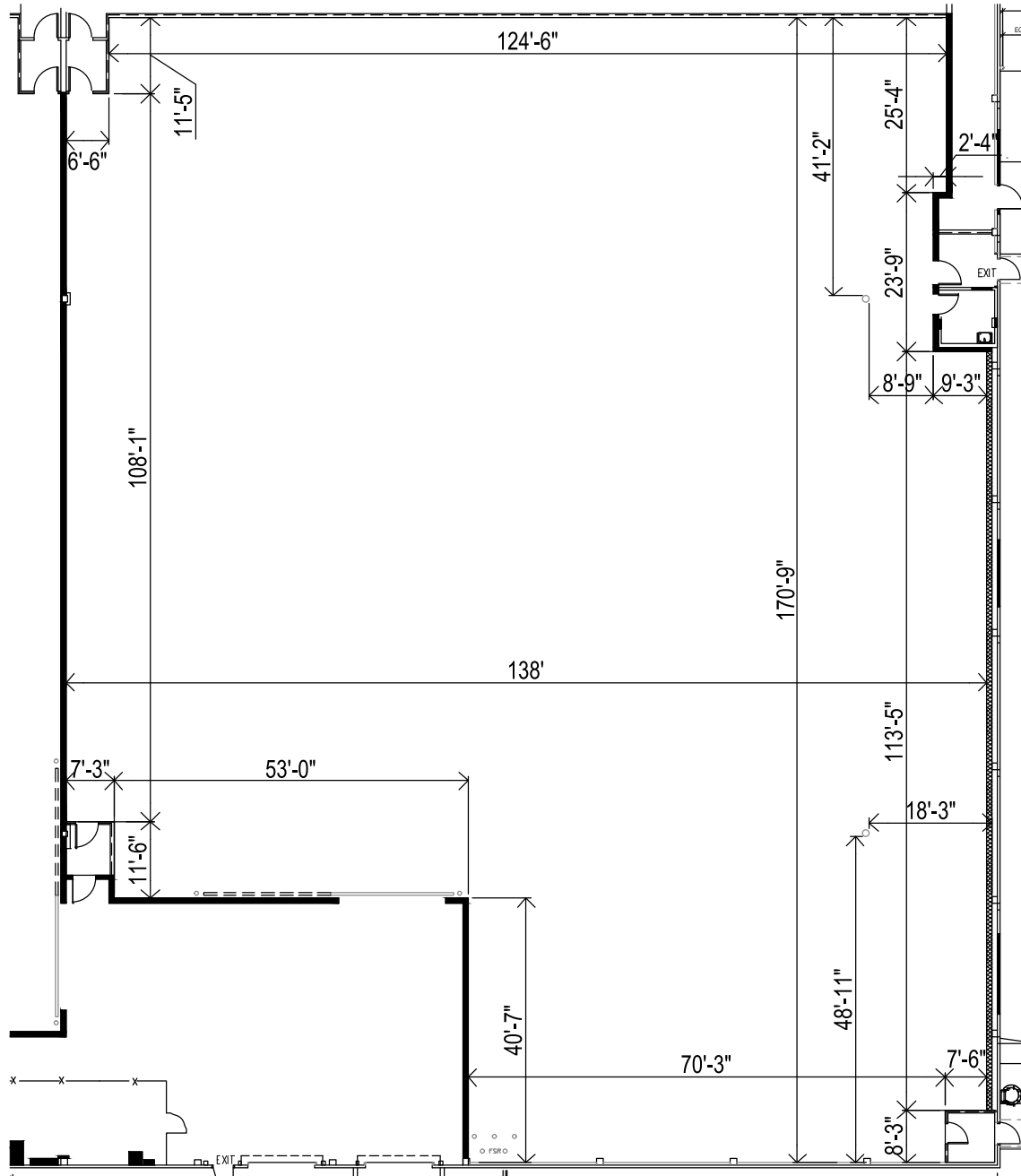


Stage 20



Specs

- 131'10" x 171'5"
- 20,752 sq ft
- 75 Tons HVAC
- 4800 Amps
- 1200 Amps Basecamp
- 4 Power Drops
- Elephant Door – 16' x 16'
- 15PSF Pipe Grid
- 24' to Grid
- 6 Ethernet Jacks

Features

- Red Light HVAC Controls
- Bell & Red Light System
- Motorized Elephant Door
- Flex Duct Connections
- Exhaust Fans
- Dock Height Loading Bay
- Loading Ramp
- 51 Dedicated Parking Spaces
(Additional Parking Available)
- WiFi Available

