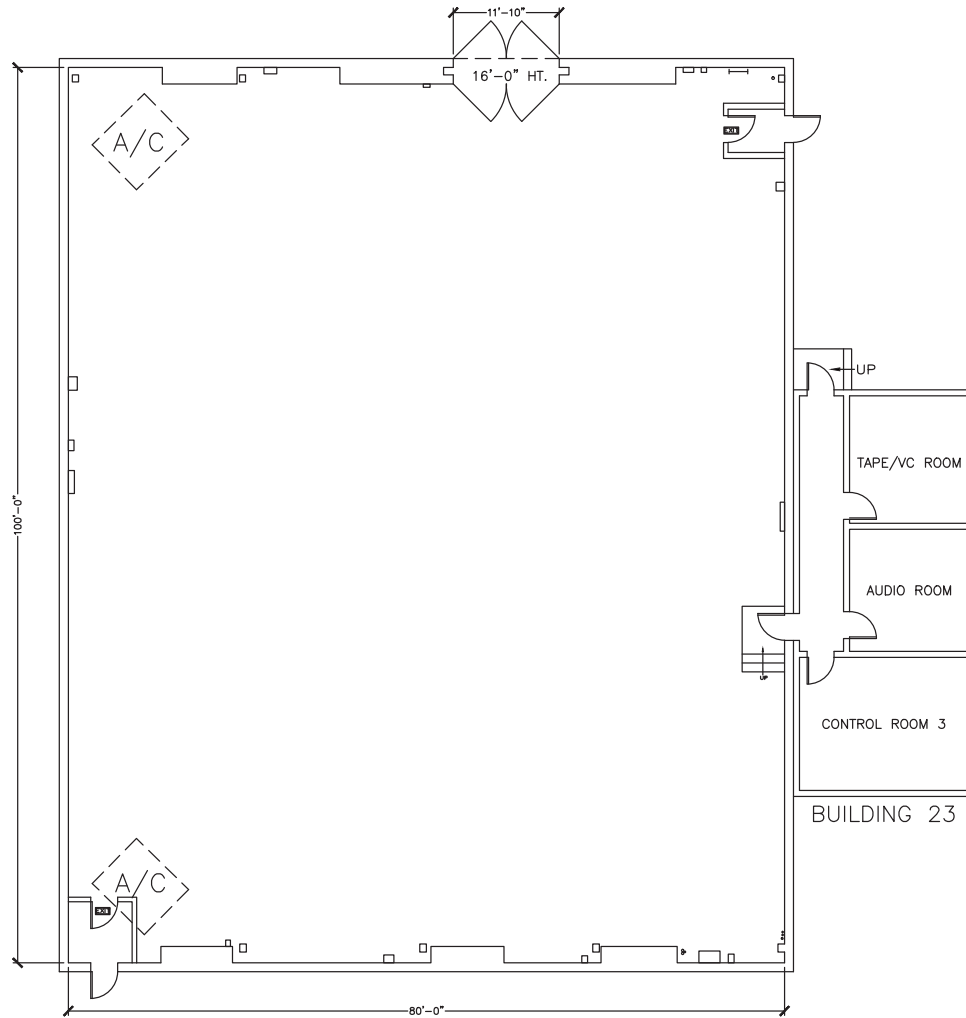


Stage 7



Width	Length	Height (Perms)	Total Stage Square Footage	Floor Type	Door (WxH)
100'	80'	24'	8,313 SF	Wood	11'10" X 16'

Stage Specifications: Stage 7



Stage Specifications

Width – 100'

Length – 80'

Height (Perms) – 24'

Total Square Footage – 8,313 SF

Floor – Wood over slab

Elephant Door (W X H) – 11'10" x 16'

Additional Info

Audience Rated – 250 + crew of 49

Drive-In – Yes

Cat Walks – Yes

Support Space

Control Room Connectivity – Yes; SMPTE fiber & audio break-outs/tech power

Dressing Rooms, Wardrobe, and Hair + Make Up rooms are available in adjacent buildings

Heavy Equipment

Stage Management to authorize

Electric Service

Production Power – 1- Switchable Buss Bar 120/208 Volt @ 3 phase 800 Amps per Phase 2400 amp Total

Tech Power – Available

Power In Grid – No

HVAC

80 tons

Redlight Control – Yes

Ventilation – No

Heating – Yes

Stage Extras

Hose Bib – Yes

Gas – Yes

Drain – No

Compressed Air – Yes

Wireless Internet – Available

Phone – Available

Fax – Available