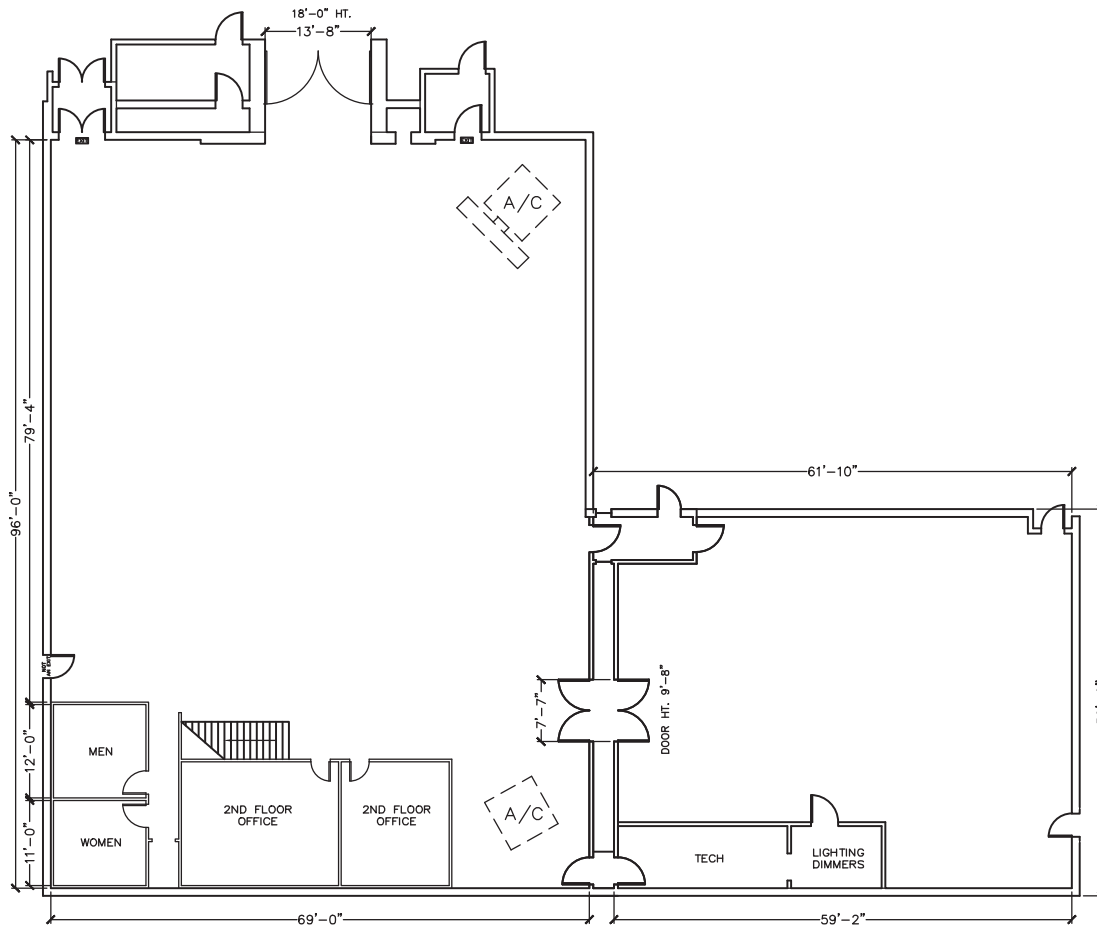


Stage 2 & 2A



2	Width	Length	Height (Perms)	Total Stage Square Footage	Floor Type	Door (WxH)
	69'	79'4"	24'	6,706	Wood	13'8" X 18'
2A	Width	Length	Height (Perms)	Total Stage Square Footage	Floor Type	Door (WxH)
	60'	50'	20'	2,826	Wood	7'7" X 9'8"

*Dimensions are for overall stage size and do not take into account stage irregularities. Production company representative should verify dimensions for particular applications.

Stage Specifications: Stage 2 & 2A

Stage Specifications (Stage 2)

Width – 69'
Length – 79'4"
Height (Perms) – 24'
Total Square Footage – 6,706 SF
Floor – Wood over slab
Elephant Door (W X H) – 13'8" X 18'

Stage Specifications (Stage 2A)

Width – 60'
Length – 50'
Height (Perms) – 20'
Total Square Footage – 2,826 SF
Floor – Wood over slab
Elephant Door (W X H) – 7'7" X 9'8"
Ventilation - Yes

Additional Info

Audience Rated – 250 + crew of 49; A3 rating
Drive-In – Yes
Cat Walks – Yes

Support Space

Control Room Connectivity – Yes; SMPTE fiber & audio break-outs/tech power
Kitchen on stage with fridge, stove
Dressing Rooms, Wardrobe, and Hair + Make Up rooms are available in adjacent buildings

Heavy Equipment

Stage Management to authorize

Electric Service

Production Power – 2 switchable buss bars 120/208v @ 3 phase 800 amps per phase 4800 total amps
240 Volts – No
480 Volts – No
Tech Power – Available
Power In Grid – No

HVAC

80 tons
Redlight Control – Yes
Ventilation – No
Heating – No

Stage Extras

Hose Bib – Yes
Gas – Yes
Drain – No
Compressed Air – Yes
Wireless Internet – Available
Phone – Available
Fax – Available